



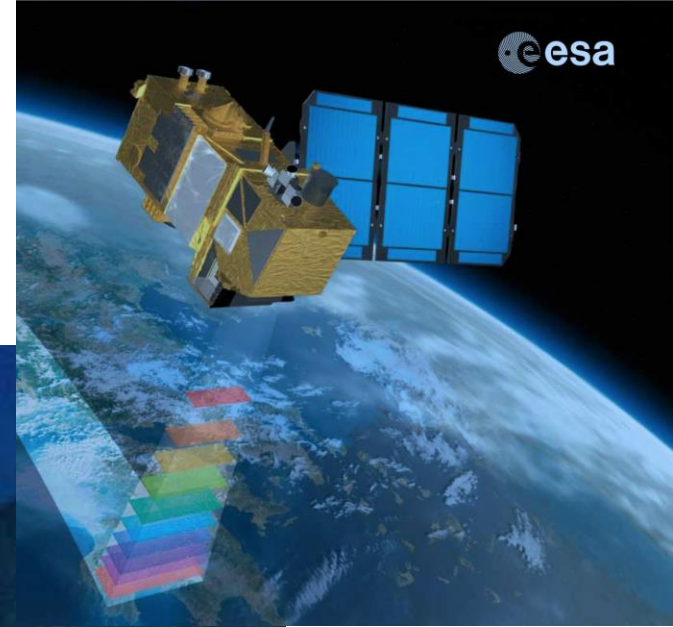
# What is *Satellite Derived Bathymetry?*

Austin Capsey, UK Hydrographic Office

# Optical Bathymetry: water attenuation



Image ©Maxar, 2013



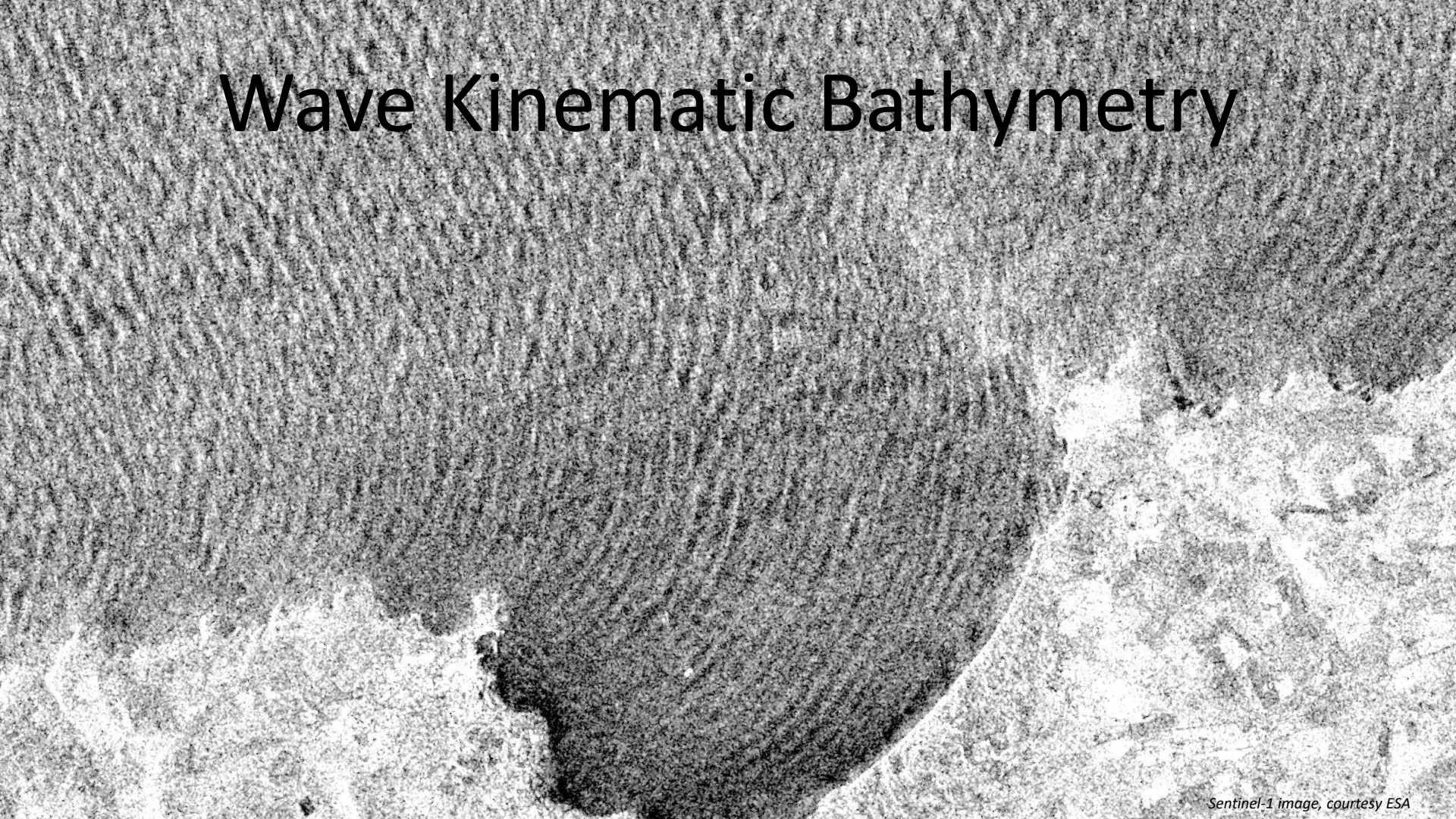
# Optical Bathymetry: photogrammetry



# Wave Kinematic Bathymetry

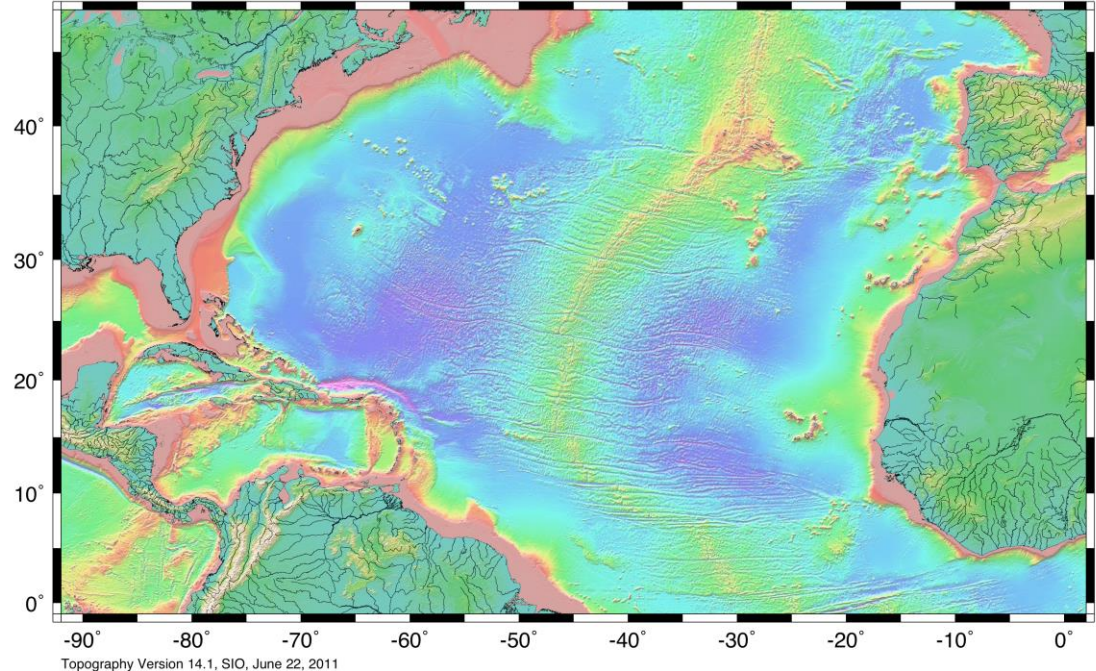
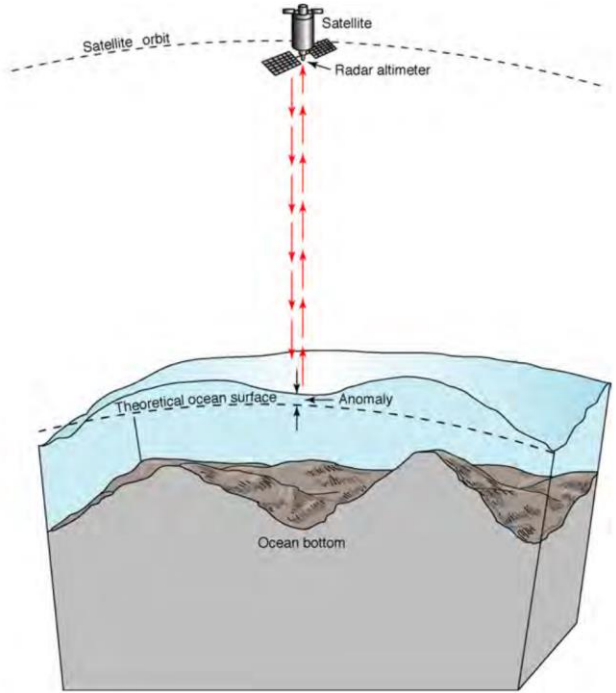


# Wave Kinematic Bathymetry



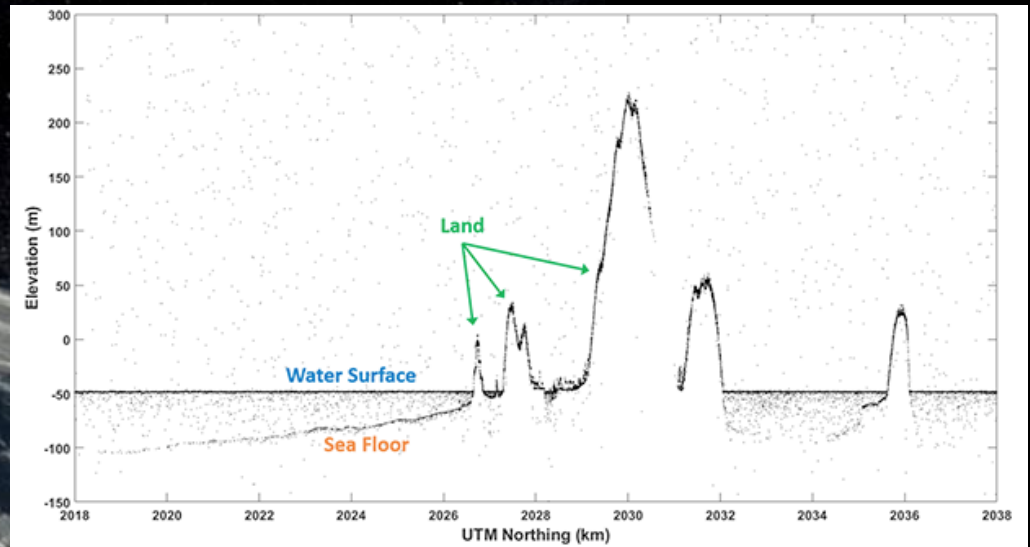
# Satellite Altimetry

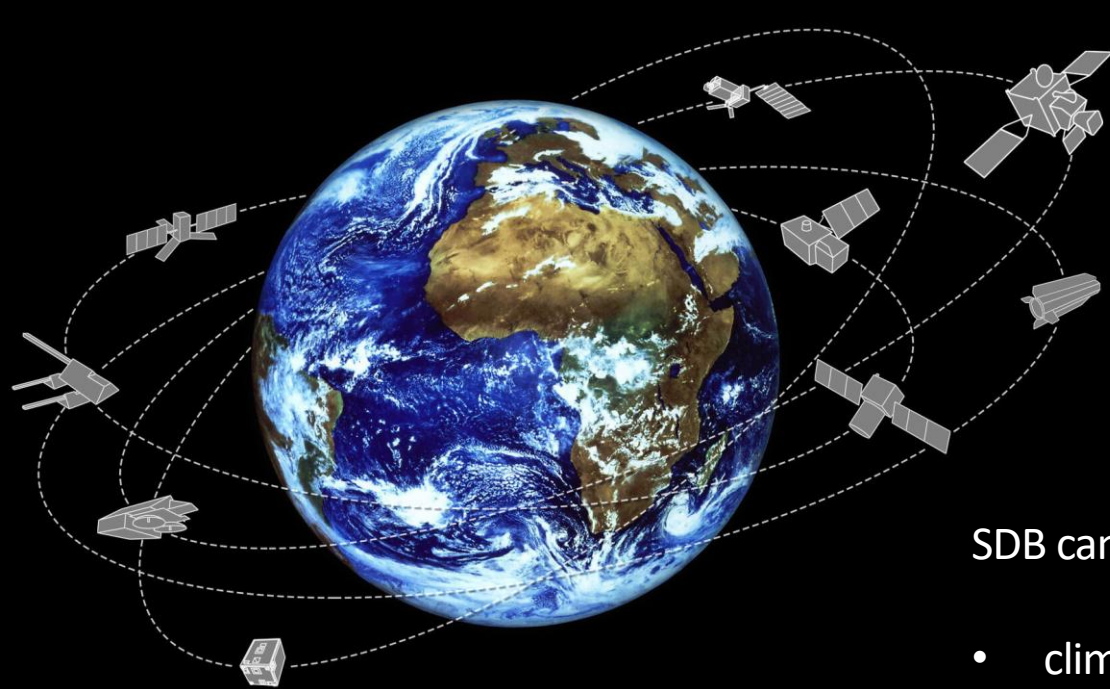
satellite altimeter



Topography Version 14.1, SIO, June 22, 2011

# Satellite LiDAR





SDB can serve a range of different purposes:

- climate science - ocean circulation & mixing
- habitat
- geology
- hydrography

Different sensors, different processing methods  
***Right tool for the right job***